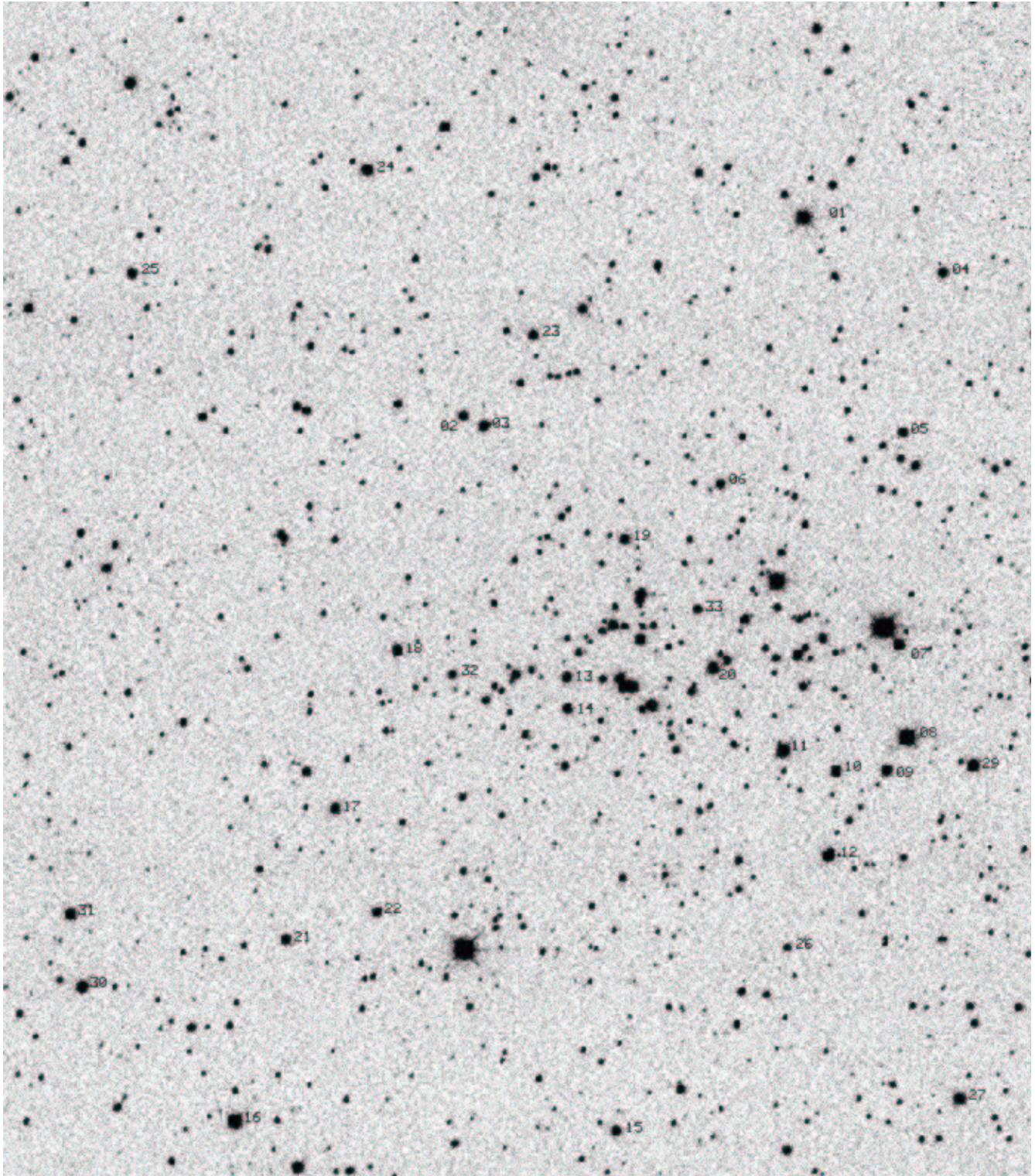


NGC 7790 Standards Field



Calibration data from Arne:

NGC7790 Standard Field
Update 14 October 1999

field center approximately star 20 at
 23:58:23.20 +61:12:25.0 J2000

4 Observations

ID	RA (J2000)	DEC	V	B-V	U-B	V-R	R-I	verr	bverr	uberr	vrerr	rierr
1	359.566634	61.280182	11.659	0.567	0.130	0.349	0.346	0.005	0.006	0.044	0.002	0.014
2	359.681309	61.247799	13.518	0.458	-0.047	0.316	0.366	0.005	0.012	0.014	0.006	0.003
3	359.674397	61.246143	13.135	0.537	0.271	0.323	0.354	0.006	0.007	0.019	0.008	0.013
4	359.519403	61.271313	13.469	0.428	0.209	0.255	0.280	0.006	0.003	0.051	0.006	0.007
5	359.532755	61.245362	13.686	0.390	-0.231	0.259	0.291	0.006	0.013	0.037	0.013	0.027
6	359.594323	61.236925	13.626	0.751	0.126	0.454	0.478	0.011	0.002	0.021	0.004	0.018
7	359.533764	61.210837	12.896	2.064	2.303	1.329	1.543	0.022	0.024	0.058	0.007	0.049
8	359.530909	61.195801	11.048	0.253	-0.567	0.183	0.203	0.022	0.007	0.041	0.005	0.005
9	359.537869	61.190471	13.242	0.509	0.310	0.312	0.345	0.013	0.007	0.015	0.013	0.001
10	359.554895	61.190279	13.108	1.224	0.779	0.709	0.699	0.011	0.009	0.026	0.004	0.020
11	359.572731	61.193578	12.125	0.409	-0.103	0.280	0.325	0.010	0.005	0.009	0.005	0.006
12	359.557342	61.176649	12.624	0.439	0.206	0.271	0.305	0.013	0.006	0.018	0.008	0.004
13	359.645726	61.205306	13.317	0.388	-0.136	0.255	0.296	0.000	0.007	0.008	0.013	0.014
14	359.645465	61.200245	13.493	0.403	-0.086	0.263	0.305	0.006	0.010	0.014	0.007	0.015
15	359.628441	61.131751	13.448	1.485	1.211	0.836	0.809	0.011	0.015	0.028	0.003	0.017
16	359.756764	61.133029	11.720	1.406	1.193	0.772	0.739	0.013	0.014	0.039	0.001	0.006
17	359.723655	61.183857	13.201	1.493	1.334	0.835	0.797	0.010	0.007	0.045	0.013	0.020
18	359.703152	61.209622	13.183	0.490	0.293	0.290	0.344	0.005	0.006	0.017	0.004	0.005
19	359.626446	61.227935	13.262	0.688	0.115	0.433	0.445	0.014	0.011	0.018	0.007	0.010
20	359.596678	61.206957	12.783	0.388	-0.125	0.265	0.310	0.006	0.010	0.008	0.002	0.001
21	359.740037	61.162632	13.342	1.484	1.405	0.811	0.760	0.014	0.014	0.049	0.004	0.010
22	359.709493	61.167122	13.724	1.381	1.092	0.784	0.757	0.014	0.013	0.022	0.010	0.004
23	359.657828	61.260930	13.454	1.521	1.382	0.869	0.820	0.011	0.008	0.034	0.006	0.012
24	359.714110	61.287535	12.953	1.292	0.971	0.752	0.716	0.009	0.007	0.053	0.006	0.023
25	359.793534	61.270575	13.677	1.367	1.289	0.864	0.792	0.008	0.004	0.064	0.004	0.008
26	359.571192	61.161605	14.499	1.205	0.731	0.696	0.664	0.012	0.013	0.032	0.009	0.010
27	359.512978	61.137231	12.462	0.691	0.108	0.428	0.440	0.013	0.009	0.045	0.006	0.011
28	359.473495	61.170573	12.784	1.353	1.105	0.748	0.699	0.017	0.013	0.039	0.007	0.021
29	359.508551	61.191277	12.499	0.531	0.163	0.324	0.338	0.013	0.009	0.035	0.005	0.011
30	359.808449	61.154727	12.812	0.791	0.292	0.486	0.527	0.009	0.010	0.047	0.007	0.011
31	359.812589	61.166475	12.592	1.733	1.904	0.945	0.894	0.013	0.016	0.053	0.007	0.006