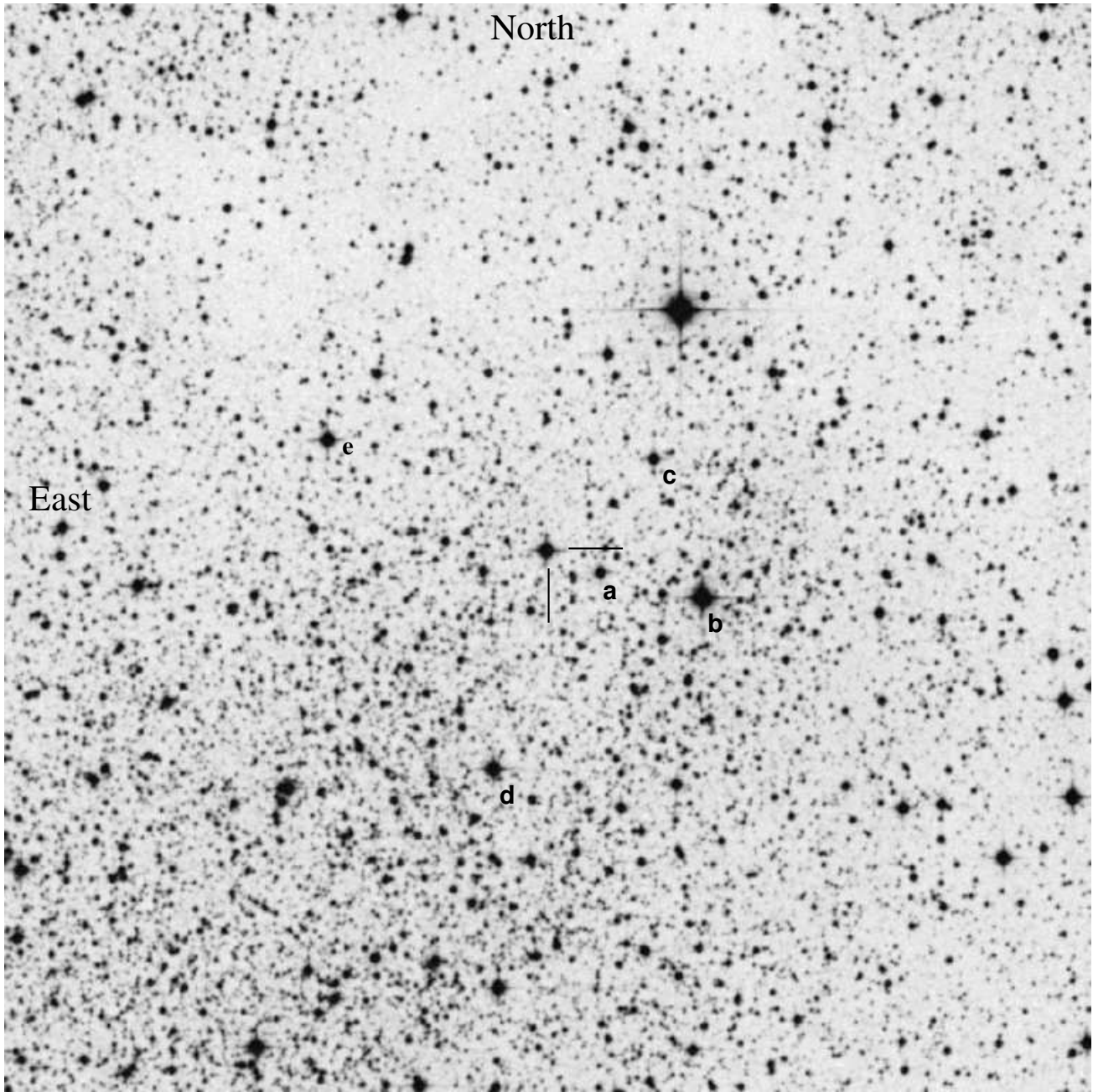


AAVSO 1820-14; J1826.2-1450; LS 5039 (LPH100)



J1826.2-1450: $18^h26^m15^s.03$ $-14^\circ50'53''.6$ (J2000) $V=11.23$
 15m ($1/4^\circ$) sq field — North up. In Scutum near Sagittarius-Serpens Cauda border,
 Uranometria 294.

Position from: SIMBAD; γ -ray-emitting persistent microquasar, O7V((f))

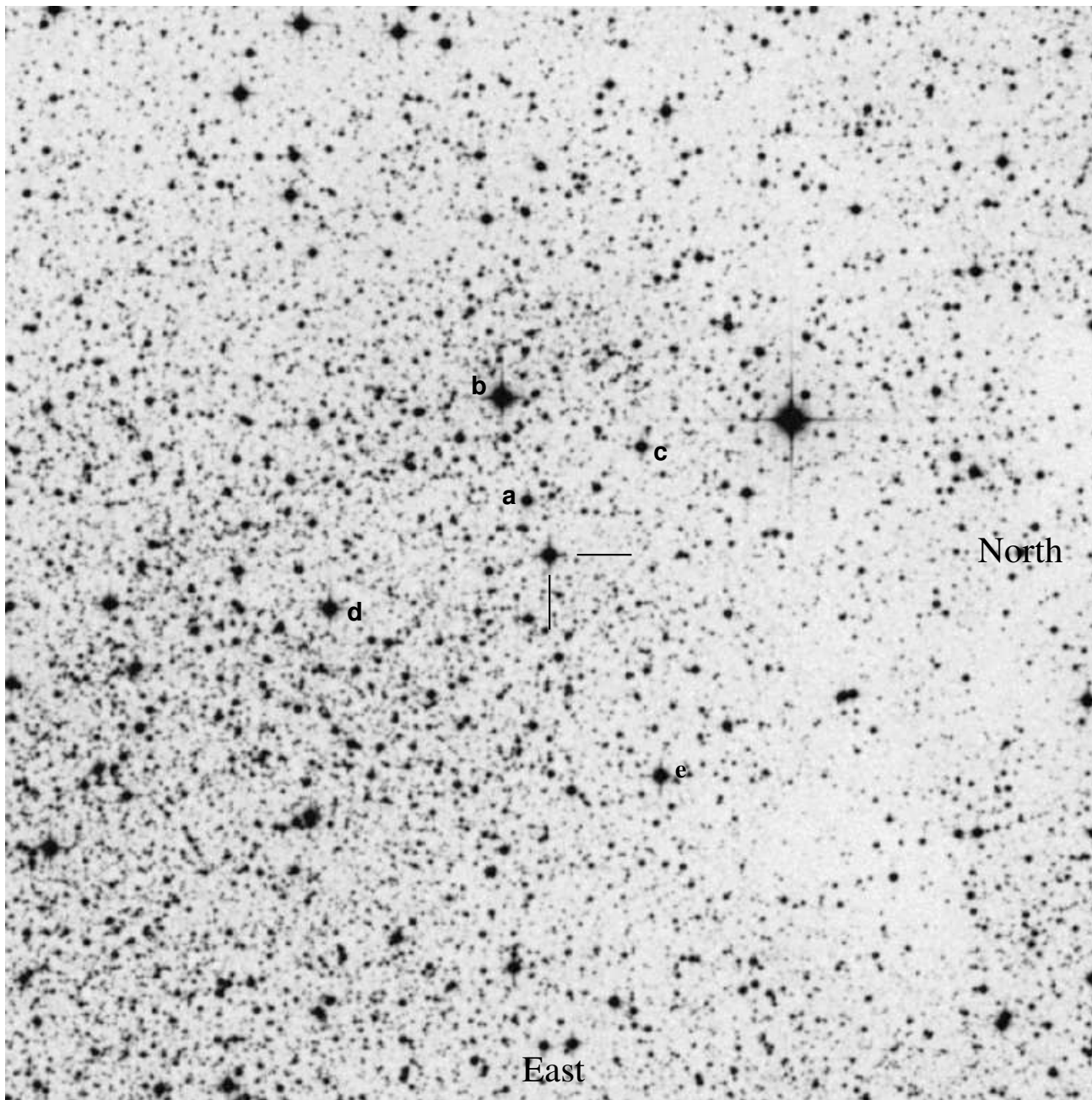
Reference star data from Martí et al. A&A 418, 271 (2004)

Ref Star	Martí et al. dsgn	B	V	R	I
a	C3	13.92	12.86	12.12	11.38
b	C2	11.24	9.94	9.22	8.56
c	C1	13.26	12.42	11.92	11.46
d					
e	C4	13.26	11.69	10.79	9.99

Please use c as the comparison star.

[Revision: 03/02/07]

AAVSO 1820-14; J1826.2-1450; LS 5039 (LPH100)



J1826.2-1450: $18^h26^m15^s.03$ $-14^\circ50'53''.6$ (J2000) $V=11.23$
 15m ($1/4^\circ$) sq field — North right, East down (i.e. *reversed*, *WFI orientation*). In
 Scutum near Sagittarius-Serpens Cauda border, Uranometria 294.
 Position from: SIMBAD; γ -ray-emitting persistent microquasar, O7V((f))

Reference star data from Martí et al. A&A 418, 271 (2004)

Ref Star	Martí et al. dsgn	B	V	R	I
a	C3	13.92	12.86	12.12	11.38
b	C2	11.24	9.94	9.22	8.56
c	C1	13.26	12.42	11.92	11.46
d					
e	C4	13.26	11.69	10.79	9.99

Please use c as the comparison star.

[Revision: 03/02/07]