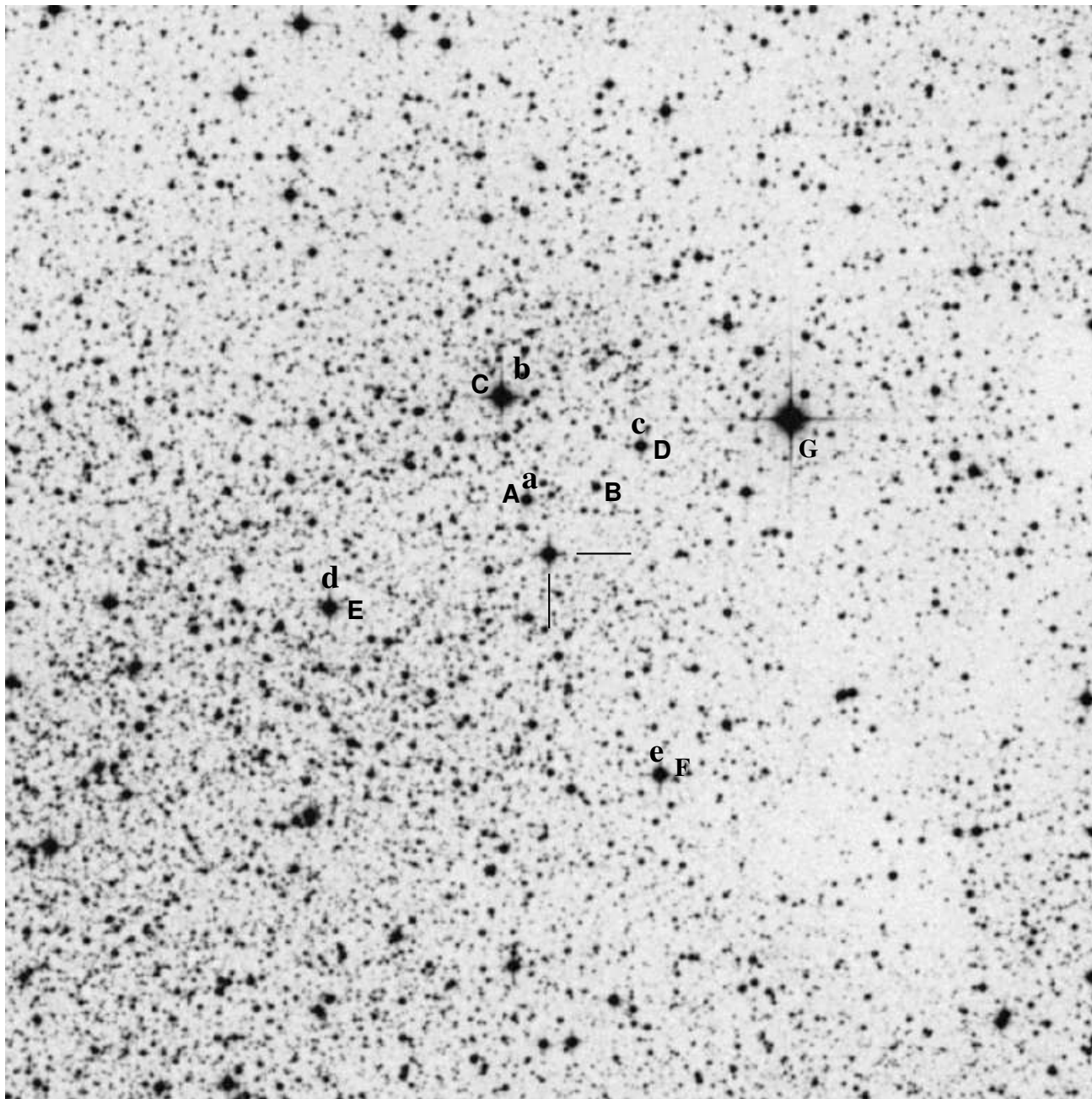


J1826.2-1450 (LS 5039) (LPH100)



J1826.2-1450: $18^h26^m15^s.03$ $-14^\circ50'53''.6$ (J2000) $V=11.23$
 15m ($1/4^\circ$) sq field — North right, East down. In Scutum near Sagittarius-Serpens
 Cauda border, Uranometria 294.

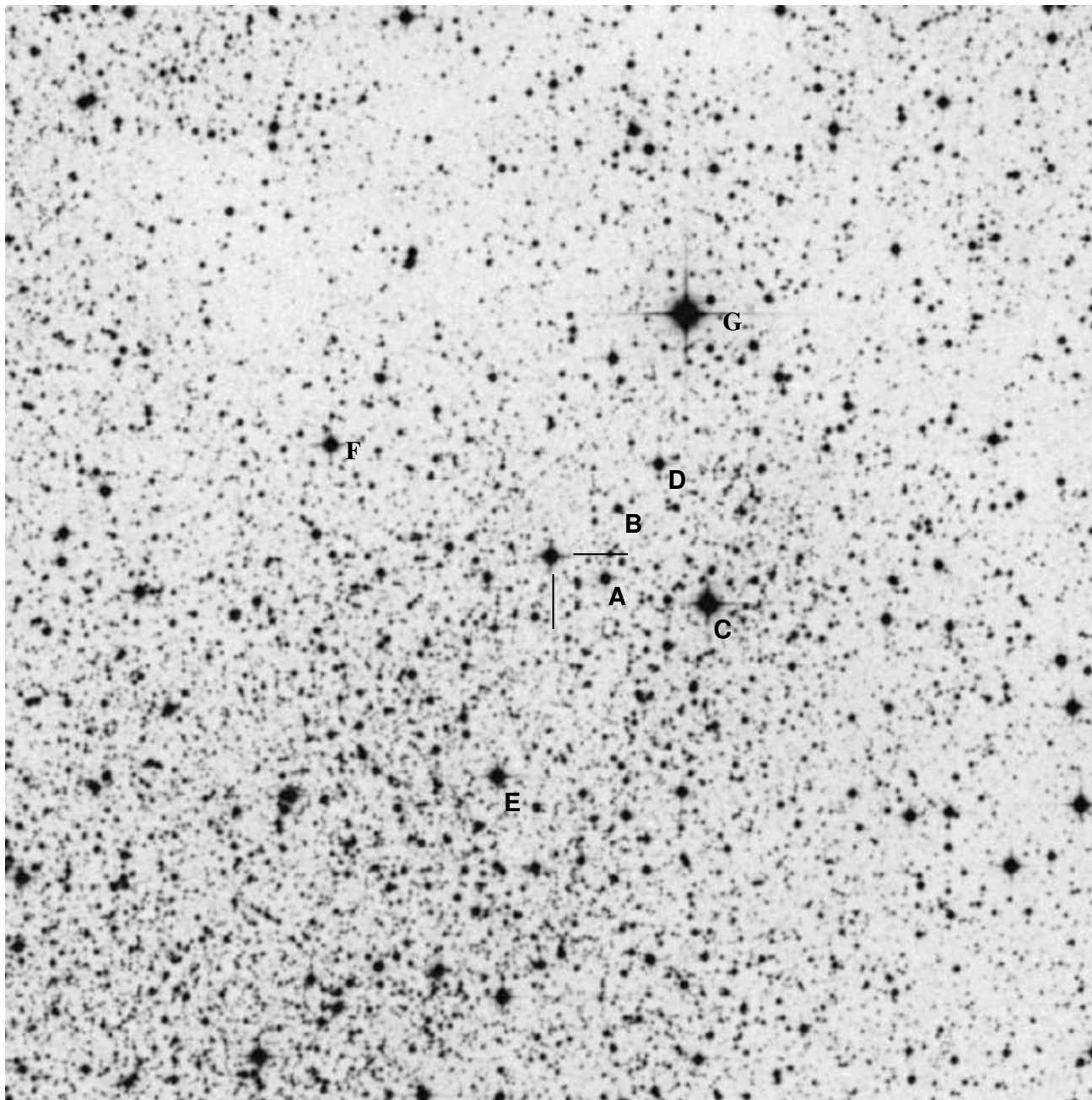
Position from: SIMBAD; γ -ray-emitting persistent microquasar, O7V((f))

Reference star data from SIMBAD (Comps in small letters on image)

Ref Star	ID	RA	Dec	B	V
A	USNO-A2.0 0750-13157934	18 26 11.97	-14 51 12.1	14.6	13.7
B	USNO-A2.0 0750-13157416	18 26 11.23	-14 50 15.0	17.1	15.5
C	USNO-A2.0 0750-13153701	18 26 06.11	-14 51 33.6	12.2	11.6
D	USNO-A2.0 0750-13155723	18 26 08.92	-14 49 38.3	13.4	12.7
E	USNO-A2.0 0750-13162766	18 26 18.12	-14 53 54.2	12.6	11.9
F	USNO-A2.0 0750-13170022	18 26 27.50	-14 49 21.3	13.5	12.4
G	HD 169633	18 26 07.36	-14 47 36.4	8.68	8.21

WFI exposure guide (sec): I=?, R=?, V=?, B=?

J1826.2-1450 (LS 5039) (LPH100)



J1826.2-1450: $18^h26^m15^s.03$ $-14^\circ50'53''.6$ (J2000) $V=11.23$
 15m ($1/4^\circ$) sq field — North up. In Scutum near Sagittarius-Serpens Cauda border,
 Uranometria 294.

Position from: SIMBAD; γ -ray-emitting persistent microquasar, O7V((f))

Reference star data from SIMBAD

Ref Star	ID	RA	Dec	B	V
A	USNO-A2.0 0750-13157934	18 26 11.97	-14 51 12.1	14.6	13.7
B	USNO-A2.0 0750-13157416	18 26 11.23	-14 50 15.0	17.1	15.5
C	USNO-A2.0 0750-13153701	18 26 06.11	-14 51 33.6	12.2	11.6
D	USNO-A2.0 0750-13155723	18 26 08.92	-14 49 38.3	13.4	12.7
E	USNO-A2.0 0750-13162766	18 26 18.12	-14 53 54.2	12.6	11.9
F	USNO-A2.0 0750-13170022	18 26 27.50	-14 49 21.3	13.5	12.4
G	HD 169633	18 26 07.36	-14 47 36.4	8.68	8.21