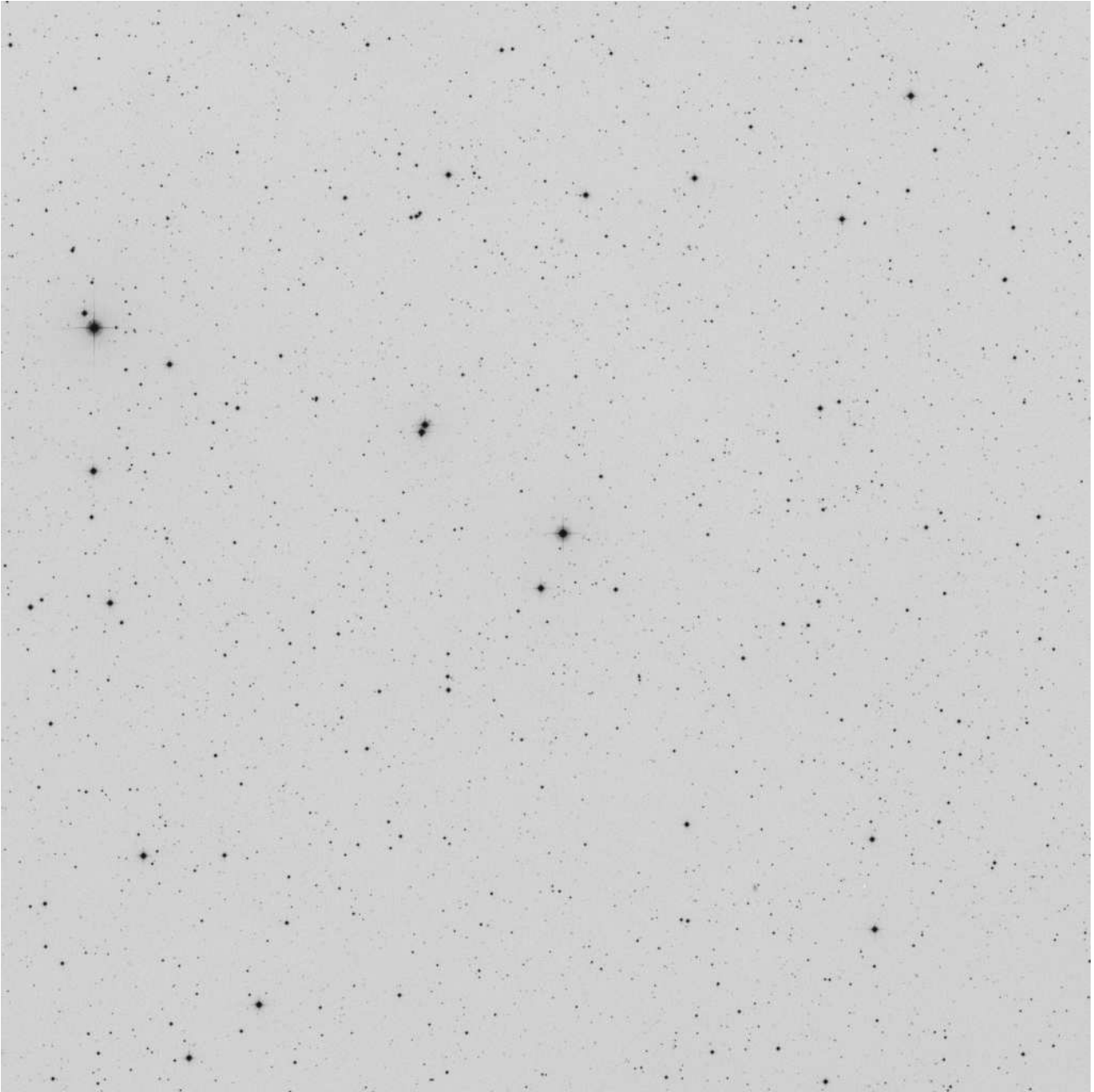


Landolt Selected Area 113

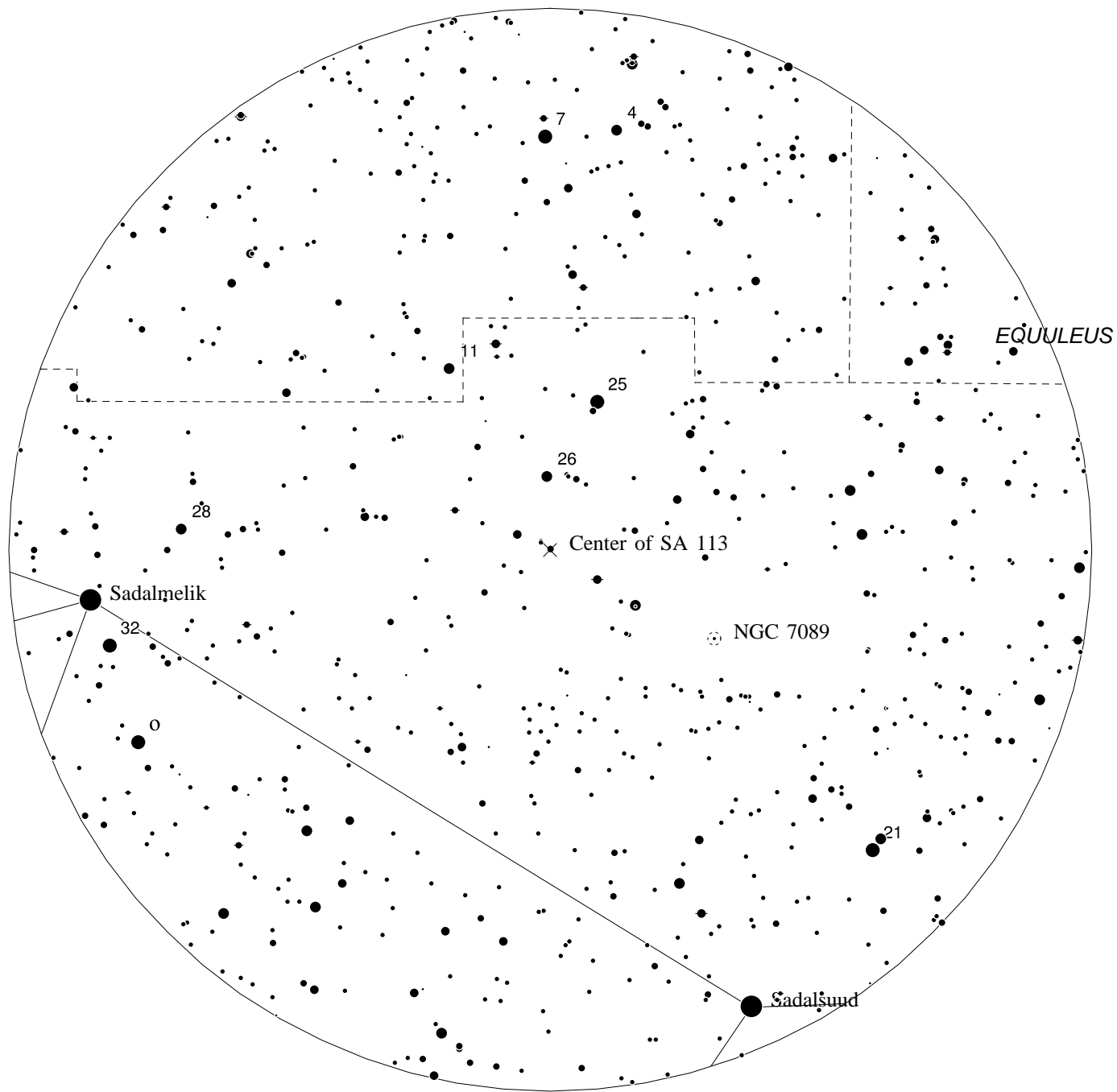


SA 113 centered on: R.A. = $21^{\text{h}}42^{\text{m}}00^{\text{s}}$ Dec. = $+00^{\circ}20'00''$
60m (1°) sq field — North up.

In Aquarius, just east of M2 (=NGC 7089), Uranometria 256.

Ref.: Landolt AU, *UBVRI* Photometric Standard Stars in the Magnitude Range
 $11.5 < V < 16.0$ around the Celestial Equator, *The Astronomical Journal*, **104**, 340-371,
436-491 (plates), 1992.

See Plate 69, p. 484 and Table 2, pp. 359,360.



Landolt Selected Area 113

(21h42m,+00d20m lim: 11.0)

