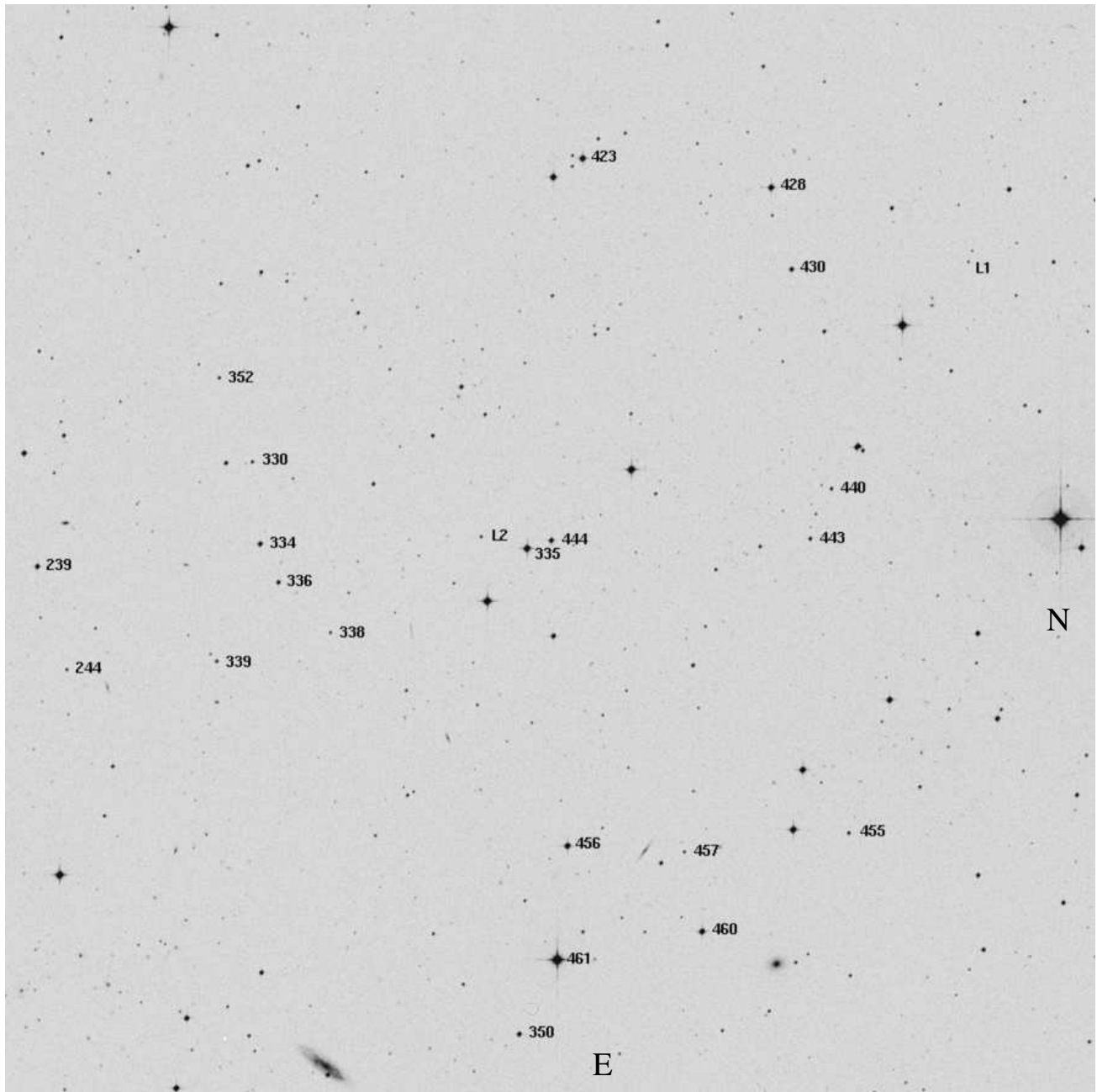


Landolt Selected Area 104 - WFI Orientation



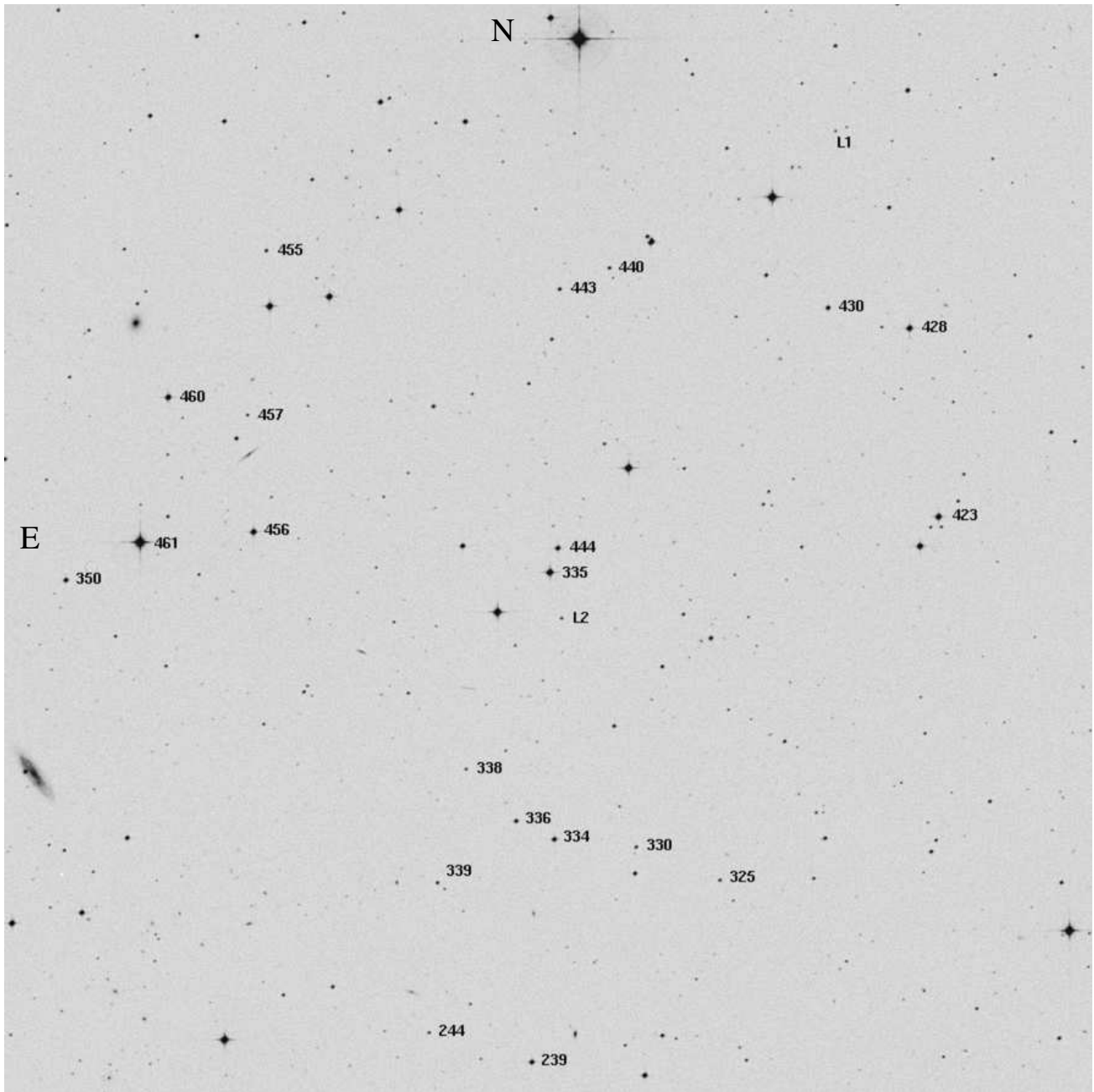
SA 104 centered on (J2000): R.A. = $12^h 42^m 21^s$ Dec. = $-00^\circ 32' 29''$ (star 444)
30m ($1/2^\circ$) sq field — WFI orientation: North right, east down.

In Virgo, above Corvus.

Ref.: Landolt AU, *UBVRI* Photometric Standard Stars in the Magnitude Range
 $11.5 < V < 16.0$ around the Celestial Equator, *The Astronomical Journal*, **104**, 340-371,
436-491 (plates), 1992.

See Plate 48, p. 463 and Table 2, pp. 354,355.

Landolt Selected Area 104 - Standard Orientation



SA 104 centered on (J2000): R.A. = $12^h 42^m 21^s$ Dec. = $-00^\circ 32' 29''$ (star 444)
30m ($1/2^\circ$) sq field — Standard orientation: North up, east left.

In Virgo, above Corvus.

Ref.: Landolt AU, *UBVRI* Photometric Standard Stars in the Magnitude Range
 $11.5 < V < 16.0$ around the Celestial Equator, *The Astronomical Journal*, **104**, 340-371,
436-491 (plates), 1992.

See Plate 48, p. 463 and Table 2, pp. 354,355.