

New analytical solutions of static and dynamic plasma equilibrium equations in axial and helical symmetry

Alexey Shevyakov

(alt. spelling Alexei Cheviakov)

University of Saskatchewan, Canada

Symmetry 2022 conference

December 14, 2022



- **Jason Keller**, M.Sc., University of Saskatchewan

- 1 MHD equations
- 2 Exact solutions with axial symmetry
- 3 Exact solutions with helical symmetry
- 4 Dynamic solutions
- 5 Discussion

- 1 MHD equations
- 2 Exact solutions with axial symmetry
- 3 Exact solutions with helical symmetry
- 4 Dynamic solutions
- 5 Discussion

Ideal incompressible magnetohydrodynamics equations

$$\frac{\partial \rho}{\partial t} + \operatorname{div} \rho \mathbf{V} = 0,$$

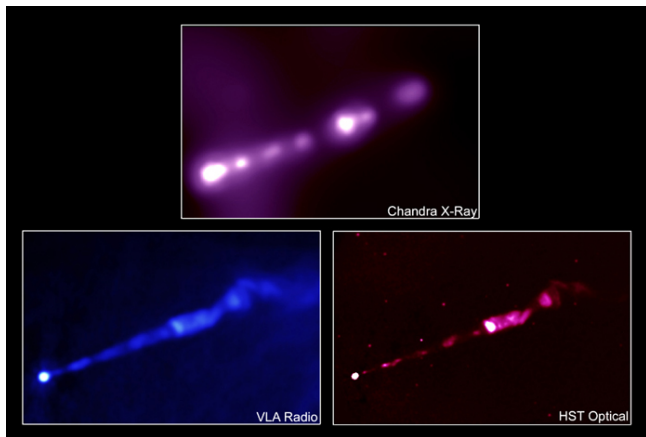
$$\rho \frac{\partial \mathbf{V}}{\partial t} = \rho \mathbf{V} \times \operatorname{curl} \mathbf{V} + \frac{1}{\mu} \operatorname{curl} \mathbf{B} \times \mathbf{B} - \operatorname{grad} P - \rho \operatorname{grad} \frac{\mathbf{V}^2}{2},$$

$$\frac{\partial \mathbf{B}}{\partial t} = \operatorname{curl}(\mathbf{V} \times \mathbf{B}),$$

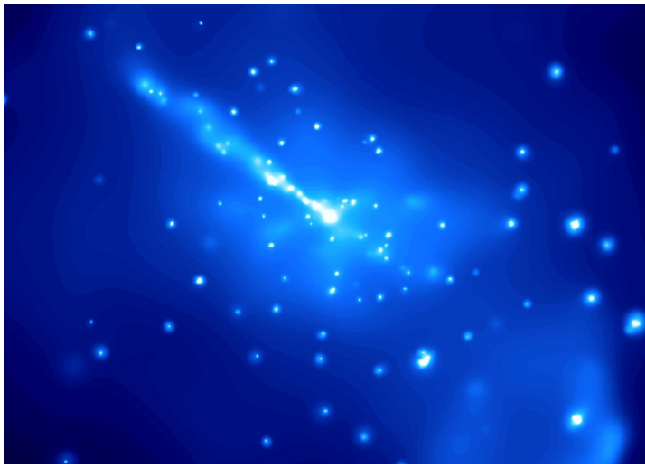
$$\operatorname{div} \mathbf{B} = 0, \quad \operatorname{div} \mathbf{V} = 0$$

Notation

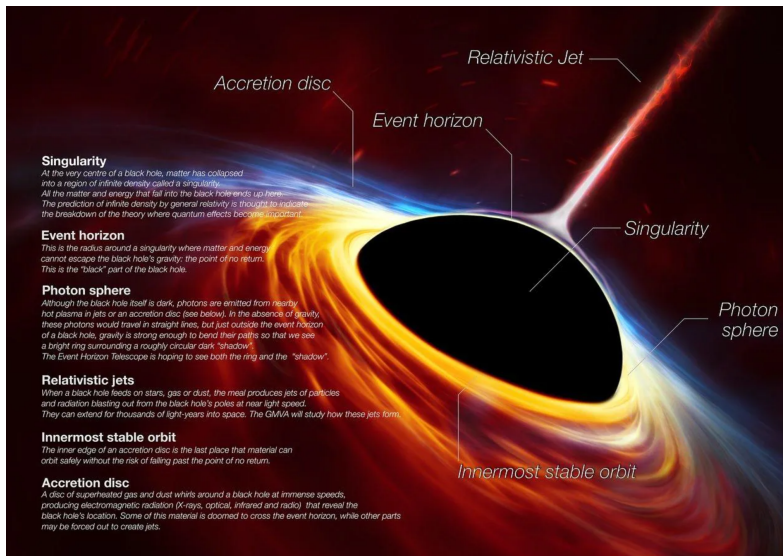
- 1 ρ plasma density
- 2 \mathbf{B} magnetic induction vector
- 3 \mathbf{V} plasma velocity vector
- 4 P scalar pressure
- 5 μ magnetic permeability coefficient

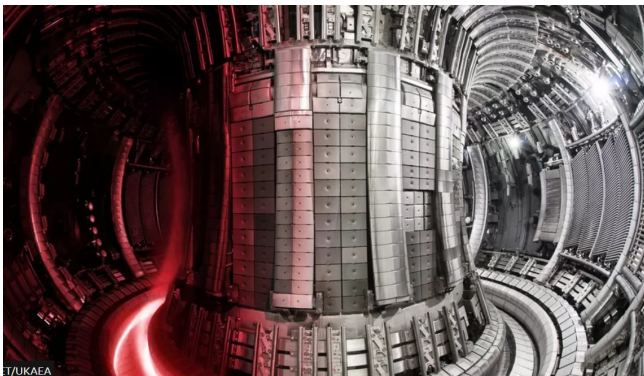


- Messier 87 supergiant elliptical galaxy jet, $\sim 5 \times 10^3$ light years



- Centaurus A: a relativistic jet from a supermassive black hole, $\sim 10^6$ light years





- Plasma discharge in the UK JET reactor

Dynamic MHD equilibria in 3D

$$\operatorname{div} \rho \mathbf{V} = 0,$$

$$\rho \mathbf{V} \times \operatorname{curl} \mathbf{V} + \frac{1}{\mu} \operatorname{curl} \mathbf{B} \times \mathbf{B} - \operatorname{grad} P - \rho \operatorname{grad} \frac{V^2}{2} = 0,$$

$$\operatorname{curl} (\mathbf{V} \times \mathbf{B}) = 0,$$

$$\operatorname{div} \mathbf{B} = \operatorname{div} \mathbf{V} = 0$$

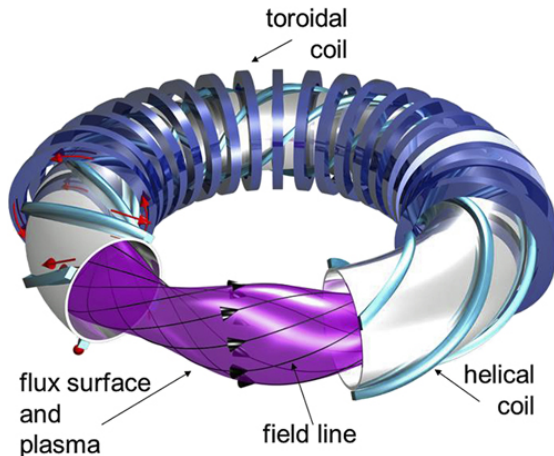
Static MHD equilibria

$$\operatorname{div} \mathbf{B} = 0,$$

$$\operatorname{curl} \mathbf{B} \times \mathbf{B} = \mu \operatorname{grad} P$$

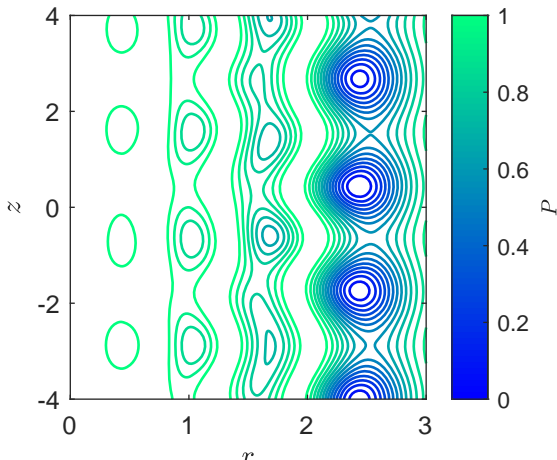
MHD equilibrium topology

- Magnetic field lines/ streamlines go to infinity
- Magnetic field lines/ streamlines are tangent to *magnetic flux surfaces*
 - topological tori
 - constant pressure or flux function



MHD equilibrium topology

- Magnetic field lines/ streamlines go to infinity
- Magnetic field lines/ streamlines are tangent to *magnetic flux surfaces*
 - topological tori
 - constant pressure or flux function



Physical requirements

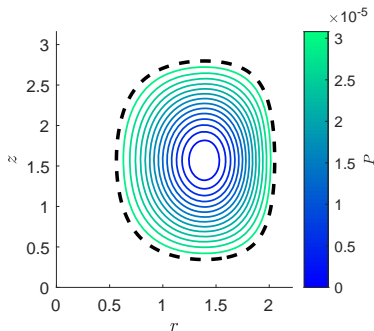
- Bounded kinetic and magnetic energy: total in \mathcal{V} , or per-layer

$$\int_{\mathcal{V}} |\mathbf{V}(\mathbf{x})|^2 dV, \quad \int_{\mathcal{V}} |\mathbf{B}(\mathbf{x})|^2 dV < +\infty$$

- Pressure asymptotics: vacuum or ambient medium

$$P \rightarrow P_0 = \text{const} \quad \text{as } |\mathbf{x}| \rightarrow +\infty \quad \text{or on } \partial\mathcal{V}$$

- Current sheet for a “truncated” configuration: $\mathbf{K} = \frac{\mathbf{B}}{\mu} \times \mathbf{n}$ on $\partial\mathcal{V}$



- 1 MHD equations
- 2 Exact solutions with axial symmetry**
- 3 Exact solutions with helical symmetry
- 4 Dynamic solutions
- 5 Discussion

Static MHD equilibria

$$\operatorname{div} \mathbf{B} = 0,$$

$$\operatorname{curl} \mathbf{B} \times \mathbf{B} = \mu \operatorname{grad} P$$

- Rotational symmetry $X = \partial/\partial\varphi$
- Magnetic field and pressure:

$$\mathbf{B} = B^r(r, z)\mathbf{e}_r + B^\varphi(r, z)\mathbf{e}_\varphi + B^z(r, z)\mathbf{e}_z, \quad P = P(r, z)$$

Static MHD equilibria

$$\operatorname{div} \mathbf{B} = 0,$$

$$\operatorname{curl} \mathbf{B} \times \mathbf{B} = \mu \operatorname{grad} P$$

- Reduction to one PDE on one dependent variable (magnetic flux function):

$$\mathbf{B} = \frac{\psi_z}{r} \mathbf{e}_r + \frac{I(\psi)}{r} \mathbf{e}_\phi - \frac{\psi_r}{r} \mathbf{e}_z, \quad P = P(\psi)$$

- Grad-Shafranov equation

$$\psi_{rr} - \frac{1}{r} \psi_r + \psi_{zz} + I(\psi) I'(\psi) = -r^2 P'(\psi)$$

- $I(\psi)$, $P(\psi)$ “free”
- **Linear cases** ($P(\psi)$ quadratic, $I(\psi)$ linear) have been considered by Bogoyavlenskij, Kaiser & Lortz, and others; interesting solutions were obtained

- Grad-Shafranov equation

$$\psi_{rr} - \frac{1}{r}\psi_r + \psi_{zz} + I(\psi)I'(\psi) = -r^2 P'(\psi)$$

- Linear ansatz:

$$P(\psi) = P_0 + b\psi + \frac{1}{2}a\psi^2, \quad I(\psi) = \alpha\psi$$

- Linear homogeneous case: $b = 0$,

$$\psi_{rr} - \frac{1}{r}\psi_r + \psi_{zz} + \frac{\partial^2 \psi}{\partial z^2} + (\alpha^2 + ar^2)\psi = 0$$

- Separation of variables:

$$Z'' = \lambda Z, \quad R'' - \frac{1}{r}R' + (\alpha^2 + ar^2 + \lambda)R = 0$$

- Z-solutions for stretched configurations:

$$Z = C_3 \sin(kz) + C_4 \cos(kz)$$

The first family of axially symmetric solutions

- R-ODE:

$$R'' - \frac{1}{r}R' + (\alpha^2 + ar^2 + \lambda)R = 0$$

- Substitution $s = qr^2$, $R(r) = S(s)$ gives

$$S'' + \left(-\frac{1}{4} + \frac{\alpha^2 - k^2}{4qs}\right)S = 0,$$

which is related to the **Whittaker ODE**

$$y''(s) + \left(-\frac{1}{4} + \frac{\delta}{s} + \frac{1/4 - \nu^2}{s^2}\right)y(s) = 0$$

when $\delta = \alpha^2 - k^2/4q$, $\nu = 1/2$.

- Separated solutions of the GS:

$$\psi_k(r, z) = \left(C_1 W_M \left(\delta, \frac{1}{2}, qr^2 \right) + C_2 W_W \left(\delta, \frac{1}{2}, qr^2 \right) \right) (C_3 \sin kz + C_4 \cos kz)$$

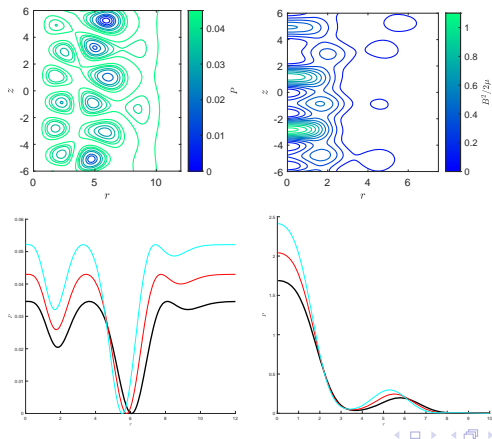
- Globally regular if and only if $\delta \in \mathbb{N}$; regularity is not necessary under proper BCs
- A general linear combination: $\Psi(r, z) = \int_{-\infty}^{\infty} \psi_k(r, z) dk$

The first family of axially symmetric solutions

- **Example [Bogoyavlenskij solutions]:** pressure and magnetic energy

$$\psi(r, z) = e^{-\beta r^2} \left(a_N L_N^*(2\beta r^2) + \sum_{n=1}^{N-1} a_n \sin(\omega_n z + b_n) L_n^*(2\beta r^2) \right)$$

- Externally supported

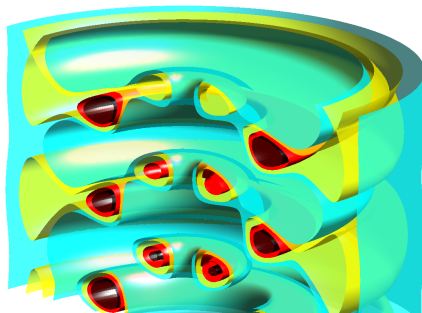


The first family of axially symmetric solutions

- **Example [Bogoyavlenskij solutions]:** pressure and magnetic energy

$$\psi(r, z) = e^{-\beta r^2} \left(a_N L_N^*(2\beta r^2) + \sum_{n=1}^{N-1} a_n \sin(\omega_n z + b_n) L_n^*(2\beta r^2) \right)$$

- Magnetic surfaces:

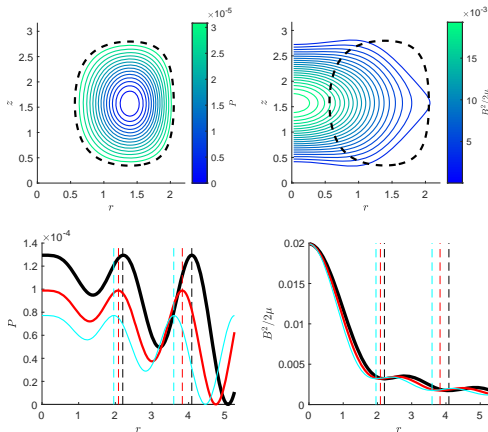


The first family of axially symmetric solutions

- **Example 2:** Whittaker functions

$$\psi_k(r, z) = \left(C_1 W_M \left(\delta, \frac{1}{2}, qr^2 \right) + C_2 W_W \left(\delta, \frac{1}{2}, qr^2 \right) \right) (C_3 \sin kz + C_4 \cos kz)$$

- Also externally supported



- **Second axial family**

- Pressure: $P(\psi) = P_0 + \frac{1}{2}q^2\psi^2$, positive inside \mathcal{V} , zero outside \mathcal{V}

- R-ODE:

$$R'' + \left(-\frac{1}{4} + \frac{k^2 - \alpha^2}{4qx} i \right) R = 0$$

- Whittaker functions of complex index \rightarrow Coulomb ODE:

$$y''(s) + \left(1 - \frac{2\sigma}{s} - \frac{L(L+1)}{s^2} \right) y(s) = 0$$

- Radial solution component:

$$R(r) = C_1 C_F \left(0, -\delta, \frac{q}{2}r^2 \right) + C_2 C_G \left(0, -\delta, \frac{q}{2}r^2 \right)$$

in terms of **Coulomb special functions**.

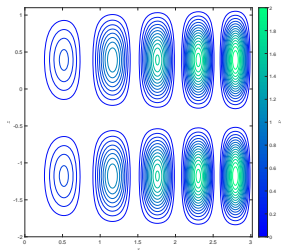
The second family of axially symmetric solutions

- Separated solutions of the GS:

$$\psi_k(r, z) = \left(C_1 \mathcal{C}_F \left(0, -\delta, \frac{q}{2} r^2 \right) + C_2 \mathcal{C}_G \left(0, -\delta, \frac{q}{2} r^2 \right) \right) (C_3 \sin kz + C_4 \cos kz)$$

- A general linear combination: $\Psi(r, z) = \int_{-\infty}^{\infty} \psi_k(r, z) dk$

- Example:** magnetic surfaces

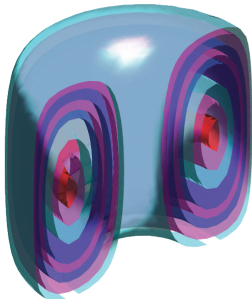


The second family of axially symmetric solutions

- Separated solutions of the GS:

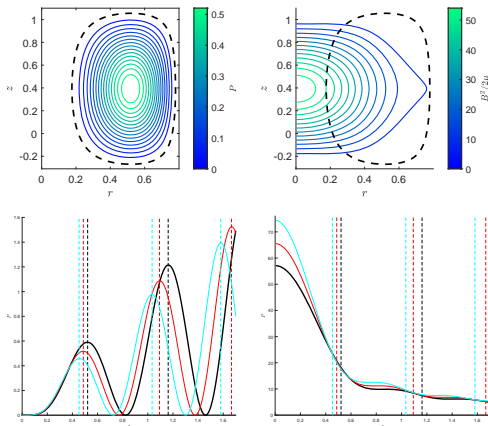
$$\psi_k(r, z) = \left(C_1 \mathcal{C}_F \left(0, -\delta, \frac{q}{2} r^2 \right) + C_2 \mathcal{C}_G \left(0, -\delta, \frac{q}{2} r^2 \right) \right) (C_3 \sin kz + C_4 \cos kz)$$

- A general linear combination: $\Psi(r, z) = \int_{-\infty}^{\infty} \psi_k(r, z) dk$
- **Example:** magnetic surfaces



The second family of axially symmetric solutions

- Configuration with lower external pressure and a current sheet



- 1 MHD equations
- 2 Exact solutions with axial symmetry
- 3 Exact solutions with helical symmetry**
- 4 Dynamic solutions
- 5 Discussion

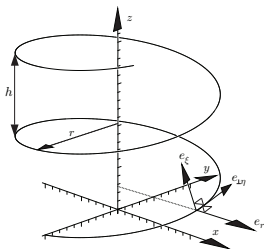
Static MHD equilibria

$$\operatorname{div} \mathbf{B} = 0,$$

$$\operatorname{curl} \mathbf{B} \times \mathbf{B} = \mu \operatorname{grad} P$$

- Rotational and translational symmetry $X_1 = \partial/\partial\varphi$, $X_2 = \partial/\partial z$
- Helical coordinates (r, η, ξ) in terms of cylindrical coordinates (r, φ, z) :

$$r, \quad \eta = \varphi + \gamma z/r^2, \quad \xi = z - \gamma\varphi$$



Static MHD equilibria

$$\operatorname{div} \mathbf{B} = 0,$$

$$\operatorname{curl} \mathbf{B} \times \mathbf{B} = \mu \operatorname{grad} P$$

- Reduction to one PDE on one dependent variable (magnetic flux function):

$$\mathbf{B} = \frac{\psi_\xi}{r} \mathbf{e}_r + \frac{rI(\psi) + \gamma\psi_r}{r^2 + \gamma^2} \mathbf{e}_\varphi + \frac{\gamma I(\psi) - r\psi_r}{r^2 + \gamma^2} \mathbf{e}_z$$

- Johnson-Frieman-Kulsrud-Oberman (JFKO) equation

$$\frac{\psi_{\xi\xi}}{r^2} + \frac{1}{r} \frac{\partial}{\partial r} \left(\frac{r}{r^2 + \gamma^2} \psi_r \right) + \frac{I(\psi)I'(\psi)}{r^2 + \gamma^2} + \frac{2\gamma I(\psi)}{(r^2 + \gamma^2)^2} = -\mu P'(\psi)$$

- $I(\psi)$, $P(\psi)$ “free”
- Consider again the linear homogeneous case: $P(\psi) = P_0 + \frac{1}{2}\sigma\psi^2$, $I(\psi) = \alpha\psi$

Static MHD equilibria

$$\operatorname{div} \mathbf{B} = 0,$$

$$\operatorname{curl} \mathbf{B} \times \mathbf{B} = \mu \operatorname{grad} P$$

- Linear JFKO:

$$\frac{1}{r^2} \frac{\partial^2 \psi}{\partial \xi^2} + \frac{1}{r} \frac{\partial}{\partial r} \left(\frac{r}{r^2 + \gamma^2} \frac{\partial \psi}{\partial r} \right) + \frac{\alpha^2 \psi}{r^2 + \gamma^2} + \frac{2\gamma\alpha\psi}{(r^2 + \gamma^2)^2} + 4\sigma\psi = 0$$

- Separated solutions $\psi(r, u) = R(r)\Xi(\xi)$

$$\Xi'' = \lambda\Xi, \quad \lambda = -\omega^2 < 0 \quad \rightarrow \quad \Xi(\xi) = C_3 \sin(\omega\xi) + C_4 \cos(\omega\xi)$$

$$r \left(\frac{r}{r^2 + \gamma^2} R' \right)' + \left(\frac{\alpha^2 r^2}{r^2 + \gamma^2} + \frac{2\gamma\alpha r^2}{(r^2 + \gamma^2)^2} + 4ar^2 \right) R = -\lambda R$$

The first family of helically symmetric solutions

- $\sigma = -\kappa^2 < 0$

- R-ODE:

$$r\left(\frac{r}{r^2 + \gamma^2}R'\right)' + \left(\frac{\alpha^2 r^2}{r^2 + \gamma^2} + \frac{2\gamma\alpha r^2}{(r^2 + \gamma^2)^2} + 4\kappa^2 r^2\right)R = \omega^2 R.$$

- Solution:

$$R(r) = e^{-\kappa r^2} \left(C_1 r^b \mathcal{H}_c(a, b, -2, c, d, -r^2/\gamma^2) + C_2 r^{-b} \mathcal{H}_c(a, -b, -2, c, d, -r^2/\gamma^2) \right)$$

$$a = \kappa\gamma^2, \quad b = \gamma\omega, \quad c = \frac{\gamma^2(\gamma^2\kappa^2 - \alpha^2 + \omega^2)}{4},$$

$$d = 1 - \frac{\kappa^2\gamma^2}{4} + \frac{\alpha^2 - \omega^2}{4}\gamma^2 + \frac{\alpha\gamma}{2},$$

where \mathcal{H}_c satisfies the **confluent Heun ODE**

$$y'' - \frac{(-x^2 a + (-b + a)x + b + 1)}{x(x - 1)} y' - \frac{((-ba - 2c)x + (b + 1)a + b - 2d + 2)}{2x(x - 1)} y = 0$$

The first family of helically symmetric solutions

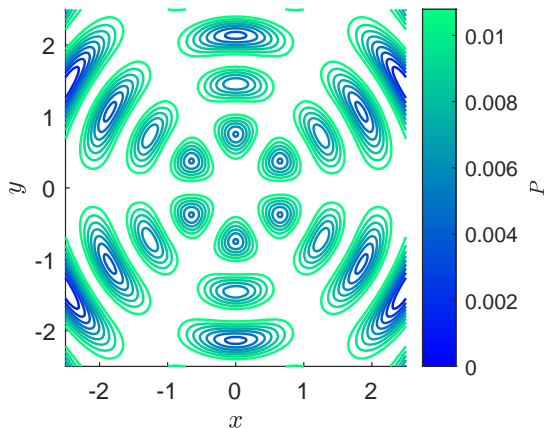
- Separated solutions of the JFKO:

$$\psi_{\omega}(r, \xi) = e^{-\kappa r^2} r^b \mathcal{H}_C(a, b, -2, c, d, -r^2/\gamma^2)(C_3 \sin(\omega\xi) + C_4 \cos(\omega\xi)).$$

- A general linear combination: $\psi(r, \xi) = \int_{-\infty}^{\infty} \psi_{\omega}(r, \xi) d\omega$

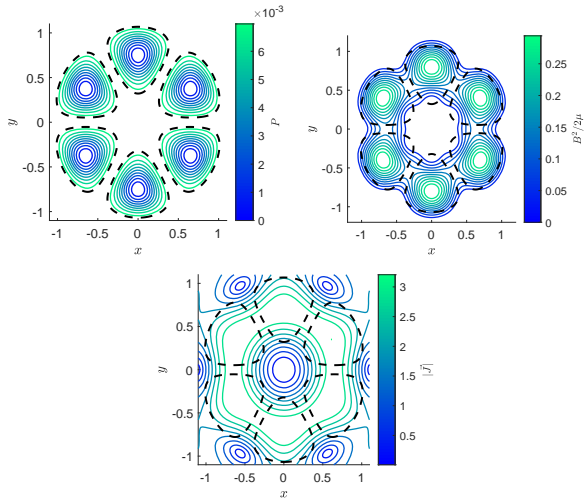
The first family of helically symmetric solutions

- **First helical family: an example**
- Magnetic surfaces: global



The first family of helically symmetric solutions

- **First helical family: an example**
- Magnetic surfaces (local/bounded), magnetic energy, current density



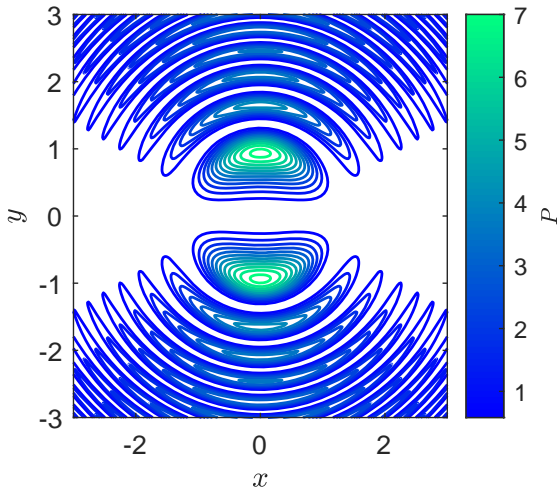
The second family of helically symmetric solutions

- $\sigma = \kappa^2 > 0$
- **Real-valued** separated solutions:

$$\psi_\omega(r, \xi) = e^{-i\kappa r^2} r^b \mathcal{H}_C(ia, b, -2, c, d, -r^2/\gamma^2) (C_1 \sin(\omega\xi) + C_2 \cos(\omega\xi))$$

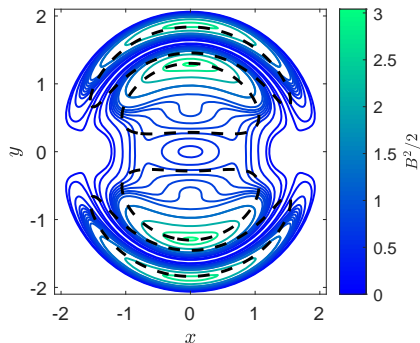
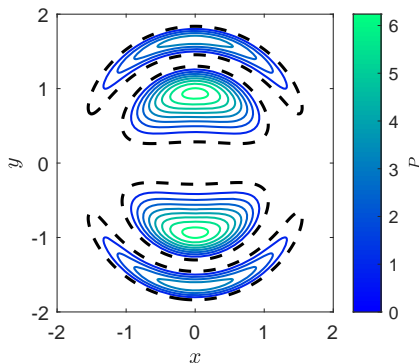
The second family of helically symmetric solutions

- **Second helical family: an example**
- Magnetic surfaces: global



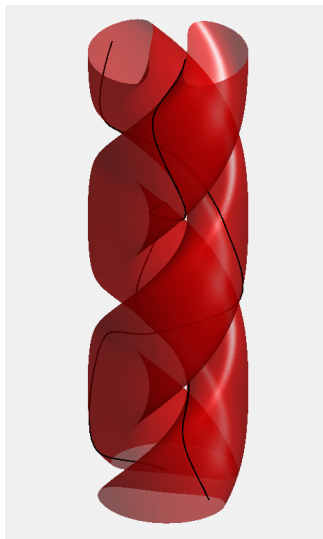
The second family of helically symmetric solutions

- **Second helical family: an example**
- Magnetic surfaces (bounded), magnetic energy



The second family of helically symmetric solutions

- **Second helical family: an example**
- A magnetic surface and tangent magnetic field lines:



- 1 MHD equations
- 2 Exact solutions with axial symmetry
- 3 Exact solutions with helical symmetry
- 4 Dynamic solutions**
- 5 Discussion

- Galas-Bogoyavlenskij transformations (**potential symmetries** of equilibrium MHD):

$$\mathbf{B}_1 = b(\psi)\mathbf{B} + c(\psi)\sqrt{\mu\rho}\mathbf{V},$$

$$\mathbf{V}_1 = \frac{c(\psi)}{a(\psi)\sqrt{\mu\rho}}\mathbf{B} + \frac{b(\psi)}{a(\psi)}\mathbf{V},$$

$$P_1 = CP + \frac{C\mathbf{B}^2 - \mathbf{B}_1^2}{2\mu},$$

$$\rho_1 = a^2(\psi)\rho$$

- $a = a(\psi)$, $b = b(\psi)$, $c = c(\psi)$ are constant on both magnetic fields lines and streamlines, and

$$b^2(\psi) - c^2(\psi) = C = \text{const.}$$

- Starting from a static equilibrium, get **field-aligned solutions**

$$\mathbf{B}_1 = \sqrt{C + c^2(\psi)}\mathbf{B},$$

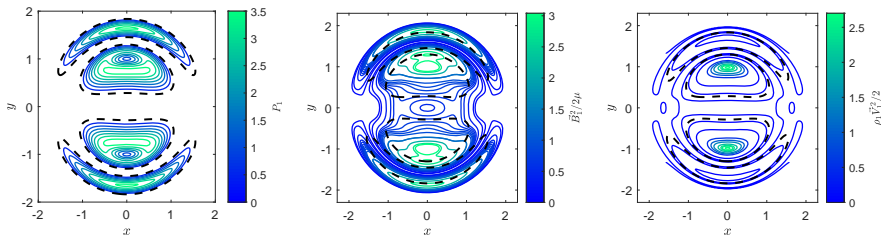
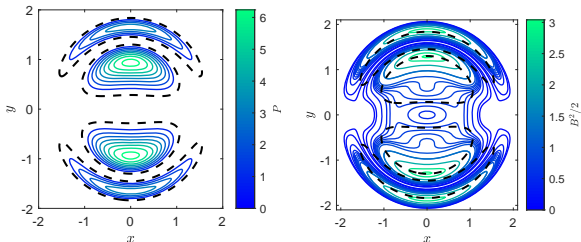
$$\mathbf{V}_1 = \frac{c(\psi)}{a(\psi)\sqrt{\mu\rho}}\mathbf{B},$$

$$P_1 = CP + -\frac{c^2(\psi)\mathbf{B}^2}{2\mu},$$

$$\rho_1 = a^2(\psi)\rho$$

- Can apply to all of the above solutions!

- **Second helical family: an example**
- **Before and after:** magnetic surfaces (bounded), magnetic energy, kinetic energy



- 1 MHD equations
- 2 Exact solutions with axial symmetry
- 3 Exact solutions with helical symmetry
- 4 Dynamic solutions
- 5 Discussion**

- New closed-form exact solutions in terms of special functions, in axial and helical symmetry, modeling prolonged static and dynamic plasma equilibria
- Field lines are not axially (or helically) symmetric
- Linear combinations of basic solutions \rightarrow no z-periodicity
- Galas-Bogoyavlenskij symmetries: a rare example of useful nonlocal symmetries in multi-dimensions
- Linear and nonlinear stability? Numerical solutions?
- Heun functions are gaining popularity; implemented in numerical software
- Any physical invariant solutions from the time-dependent helical system [Dierkes and Oberlack (2017)]?



Keller, J. and Cheviakov, A. F. (2022)

New exact plasma equilibria with axial and helical symmetry.
arXiv:2203.15584



Galas, F. (1993)

Generalized symmetries for the ideal MHD equations.
Physica D: Nonlinear Phenomena 63, 87–98



Bogoyavlenskij, O. I. (2002)

Symmetry transforms for ideal magnetohydrodynamics equilibria.
Physical Review E 66, 056410



Ed.: Ronveaux, A. (1995)

Heun's Differential Equations. Oxford University Press



Dierkes, D. and Oberlack, M. (2017)

Euler and Navier–Stokes equations in a new time-dependent helically symmetric system: derivation of the fundamental system and new conservation laws.
Journal of Fluid Mechanics 818, 344–365